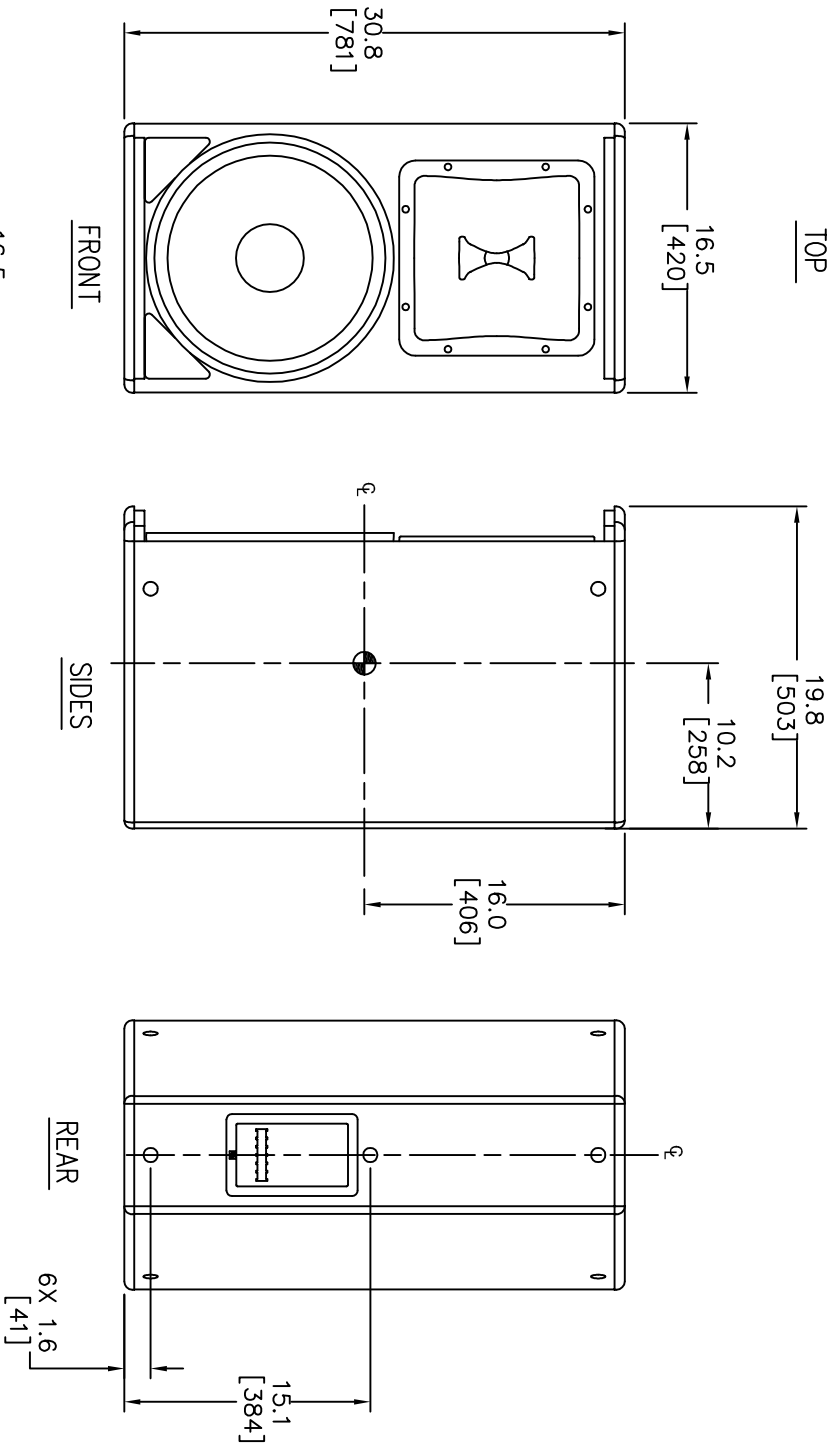
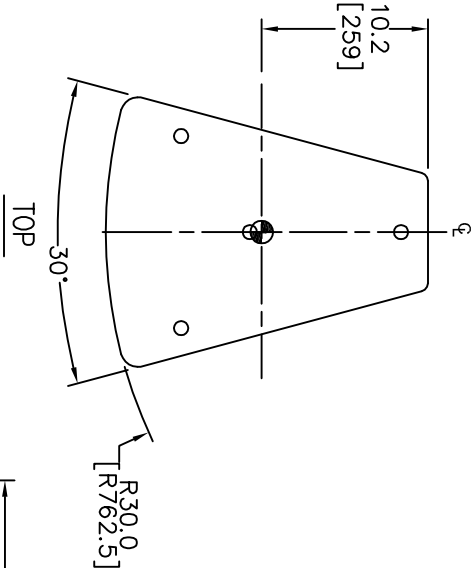


THESE DRAWINGS AND SPECIFICATIONS ARE THE PROPERTY OF JBL INCORPORATED. THEY ARE ISSUED IN STRICT CONFIDENCE AND SHALL NOT BE REPRODUCED OR USED AS THE BASIS FOR MANUFACTURE OR APPARATUS WITHOUT WRITTEN PERMISSION.

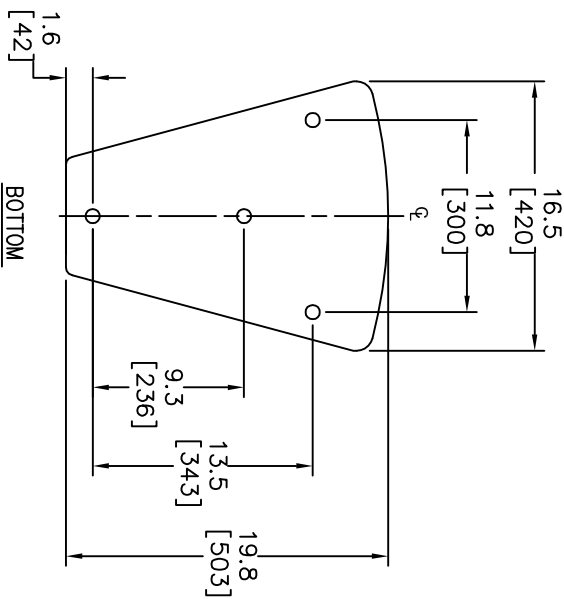
ALL MATERIAL SPECIFIED ON THIS DRAWING SHALL COMPLY WITH EUROPEAN DIRECTIVE 2002/95/EC. [F013]

REVISIONS						
CHG	LTR	DESCRIPTION	DEPT	D.C	DATE	APPR
38459	A	RELEASE TO MARKETING	TH		8/4/09	BW
38778	B	REV DIMENSIONING SCHEME	TH		9/8/09	BW
39049	C	REV DIMENSIONING SCHEME	YT			



8. CENTER OF GRAVITY (CG)
7. WEIGHT: 25.0 Kg [55 LBS]
6. SUSPENSION POINTS: M10 THREADED SUSPENSION POINTS. 4X TOP, 4X BOTTOM, 2X LEFT, 2X RIGHT, 3X REAR
5. COMPONENTS: LF – 265H-1
HF – 2408H-1
4. INPUT CONNECTORS: NEUTRIK NL4 IN PARALLEL WITH 4 POSITION TERMINAL STRIP.
3. GRILL: 14 GA. PERFORATED CRS, POWDER COATED BLACK WITH BLACK FOAM BACKING.
2. MATERIALS: 5/8 INCH BIRCH PLYWOOD.
1. FINISH: BLACK DURAFLEX
(WHITE AVAILABLE BY CUSTOM ORDER)

- NOTES: (UNLESS OTHERWISE SPECIFIED)
1. FINISH: BLACK DURAFLEX
(WHITE AVAILABLE BY CUSTOM ORDER)
 2. MATERIALS: 5/8 INCH BIRCH PLYWOOD.
 3. GRILL: 14 GA. PERFORATED CRS, POWDER COATED BLACK WITH BLACK FOAM BACKING.
 4. INPUT CONNECTORS: NEUTRIK NL4 IN PARALLEL WITH 4 POSITION TERMINAL STRIP.
 5. COMPONENTS: LF – 265H-1
HF – 2408H-1
 6. SUSPENSION POINTS: M10 THREADED SUSPENSION POINTS. 4X TOP, 4X BOTTOM, 2X LEFT, 2X RIGHT, 3X REAR
 7. WEIGHT: 25.0 Kg [55 LBS]
 8. CENTER OF GRAVITY (CG)



TOLERANCES (UNLESS OTHERWISE SPECIFIED)		
X.XX ± .063 INCH		
X.X ± .125 INCH		
ANGULAR TOLERANCE OF 0°-30°		
FRACTIONAL DIMENSIONS ± 1/32		
* DIMENSIONS ARE INCHES		
* ALL DIMENSIONS ARE FINISHED DIMENSIONS		
* DO NOT SCALE DRAWING		
<div>JBL</div> <div>JBL PROFESSIONAL A Harman International Company Northridge, California 91329 U.S.A.</div>		
TITLE CUSTOMER DRAWING: AM5215/XX		
SIZE A	DRAWING NO. 443936	REV C
SCALE NTS	SHEET 1	OF 1